

Populating Management Systems with “Quality” Data



David Phillips
Wales Quality Centre

Wales Quality Centre



- Corporate Membership organisation.
- 100 members.
- In existence for 30 years.
- Founded by Vincent Kane – Chairman.
- Supported by the Government of the day.
- Founder members include 3M, Sony, Royal Mint, FSG.

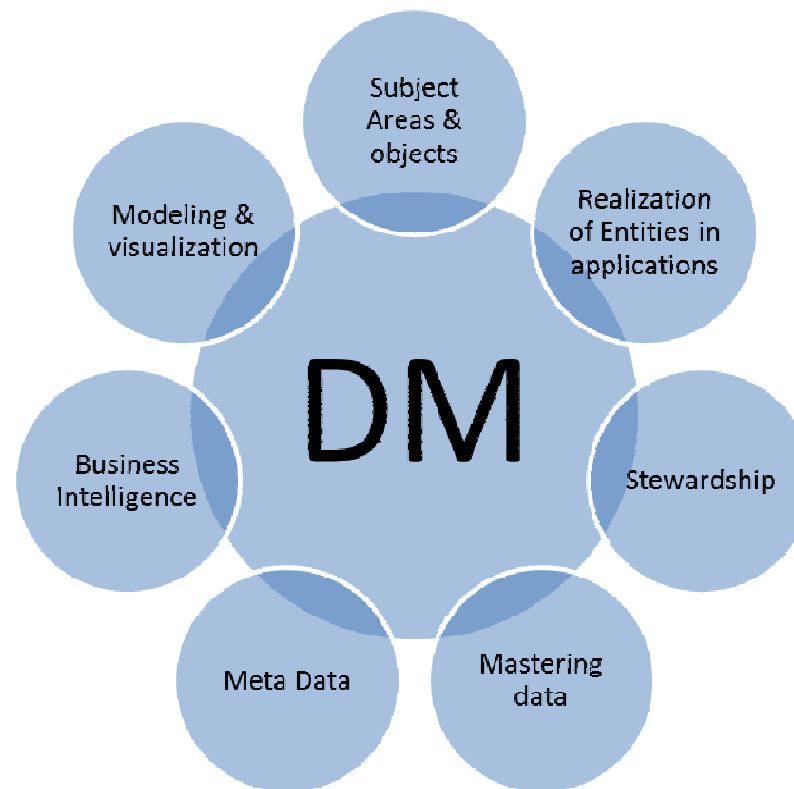
Wales Quality Centre



- The official definition provided by DAMA International, the professional organization for those in the data management profession, is:
- *"Data Resource Management is the development and execution of architectures, policies, practices and procedures that properly manage the full data lifecycle needs of an enterprise."*

Wales Quality Centre

- Data management comprises all the disciplines related to managing data as a valuable resource.



Wales Quality Centre



- Journey to Excellence
- Business Excellence Model – 9 criteria
- Assessment and report
- Report – scores and narrative across 9 criteria
- 4 criteria are result areas:
- Customer results, people results, society results, Key business results

Wales Quality Centre

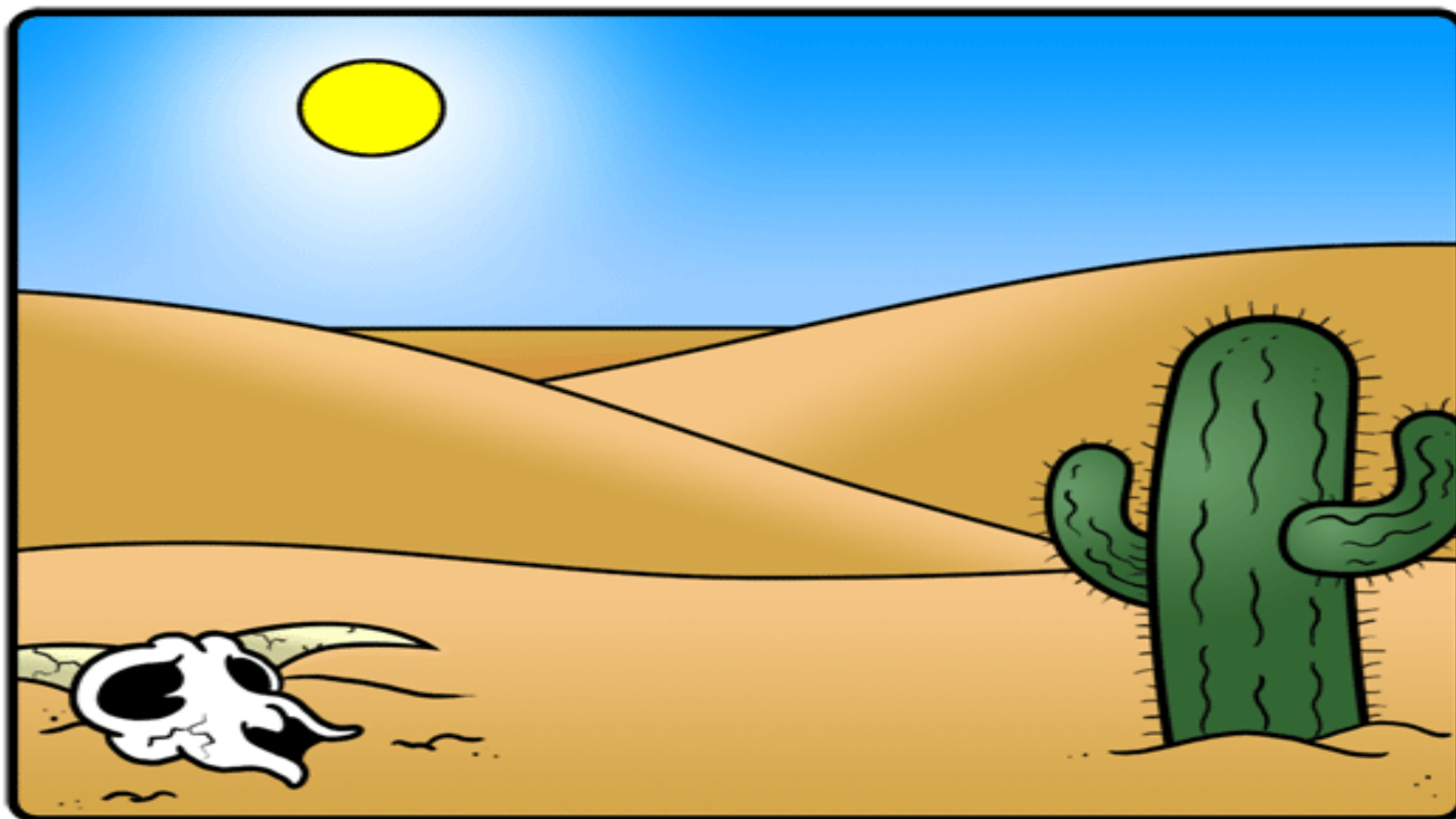


- To much data:



Wales Quality Centre

- No data



Wales Quality Centre



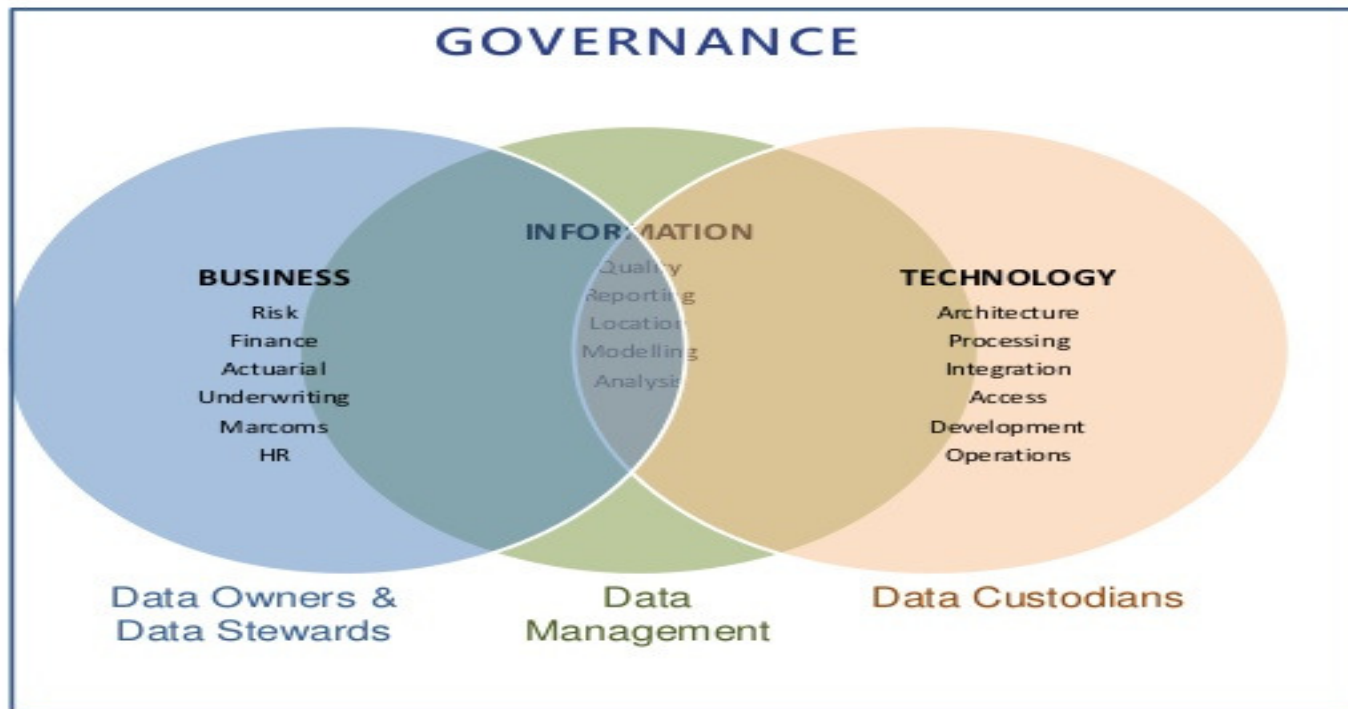
- Who looks after the data:



Wales Quality Centre



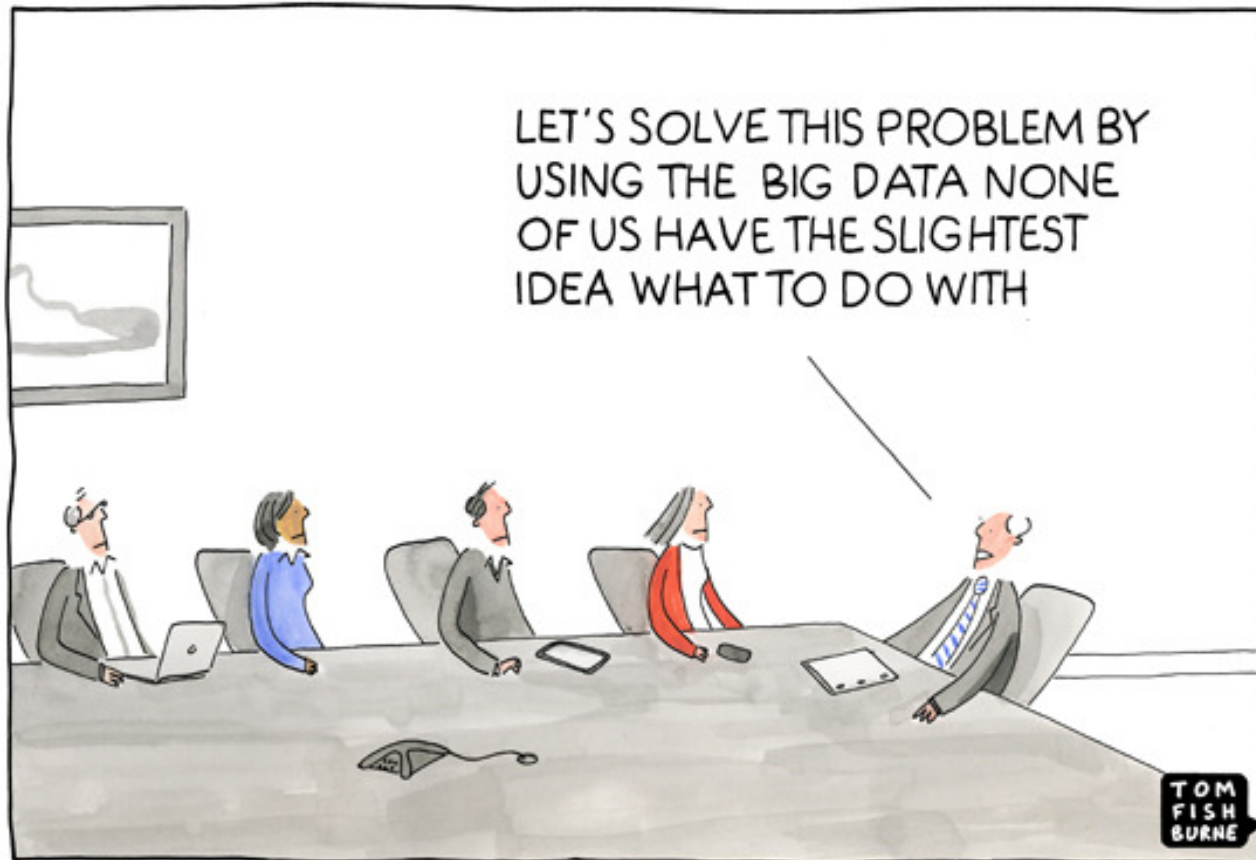
Governance:



Wales Quality Centre



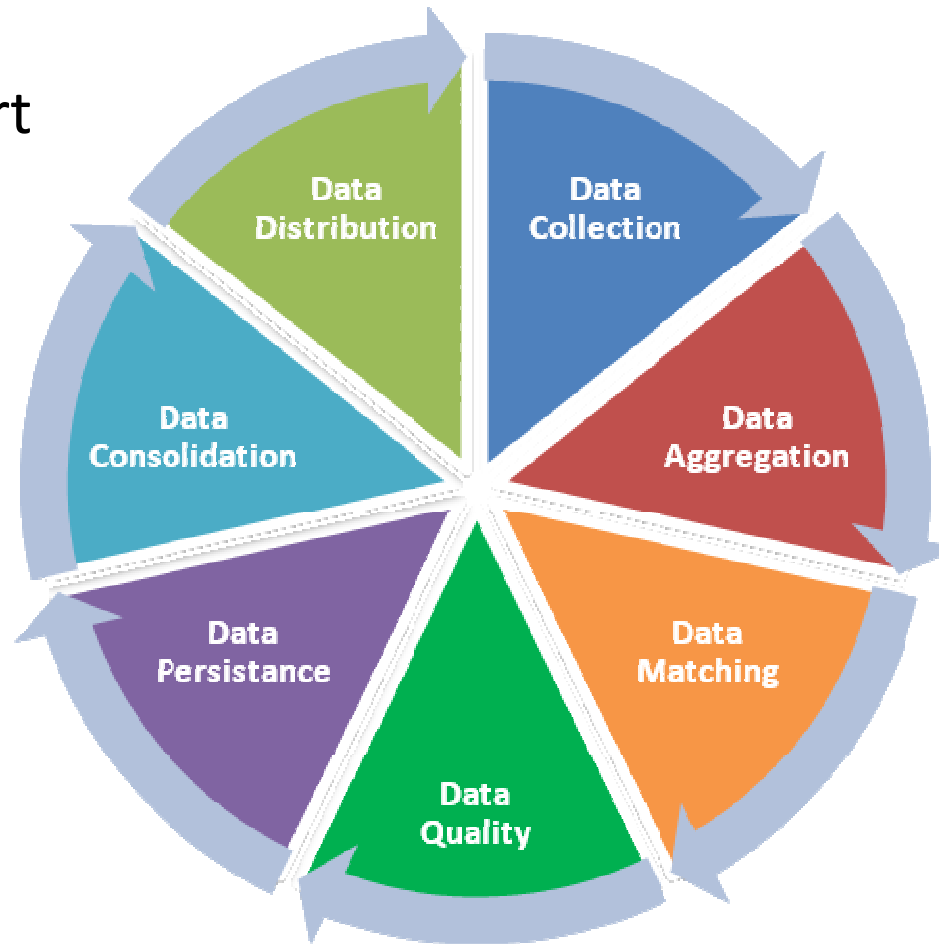
- Data Steward



Wales Quality Centre

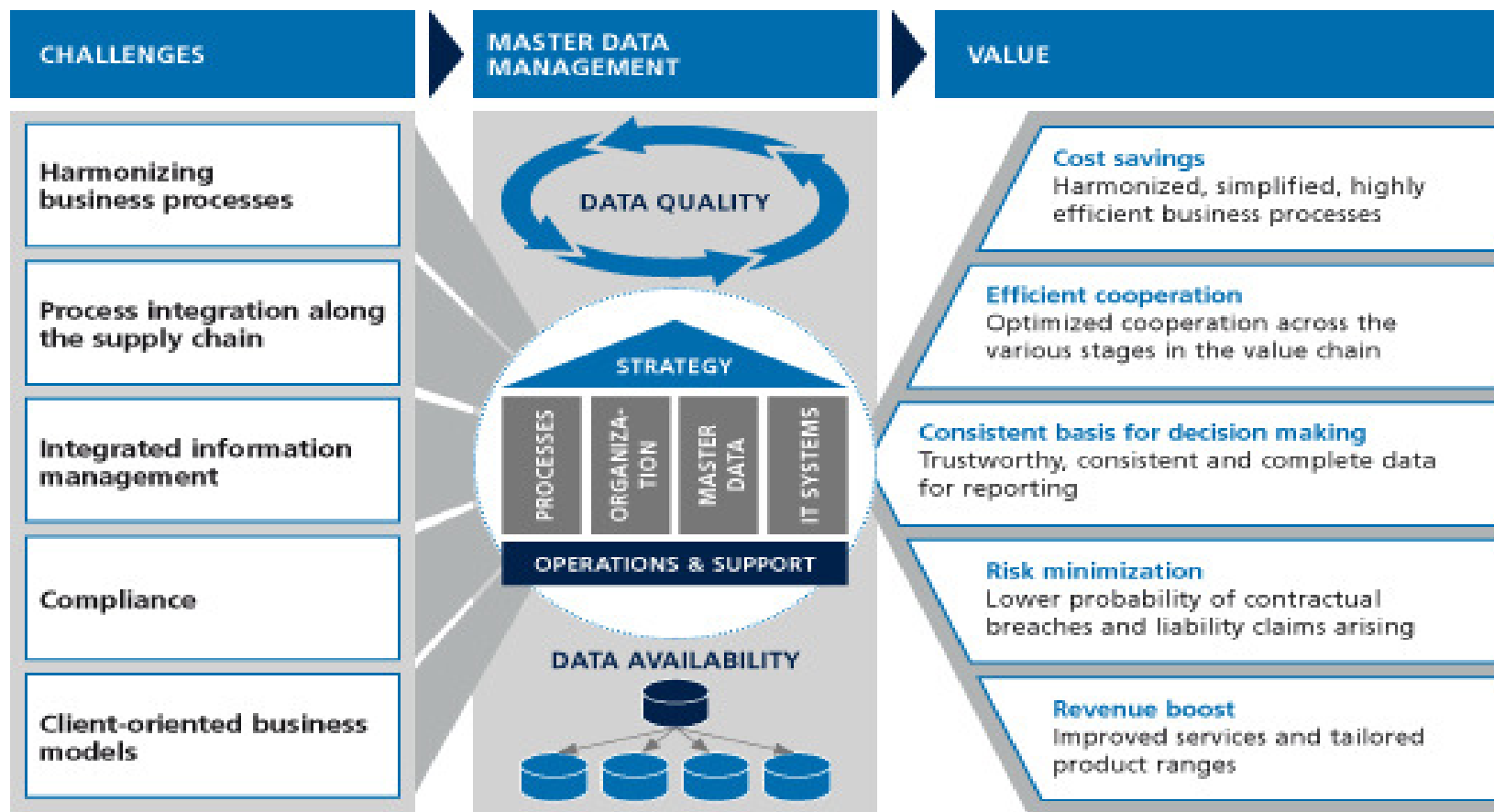


- Whereto start



Wales Quality Centre

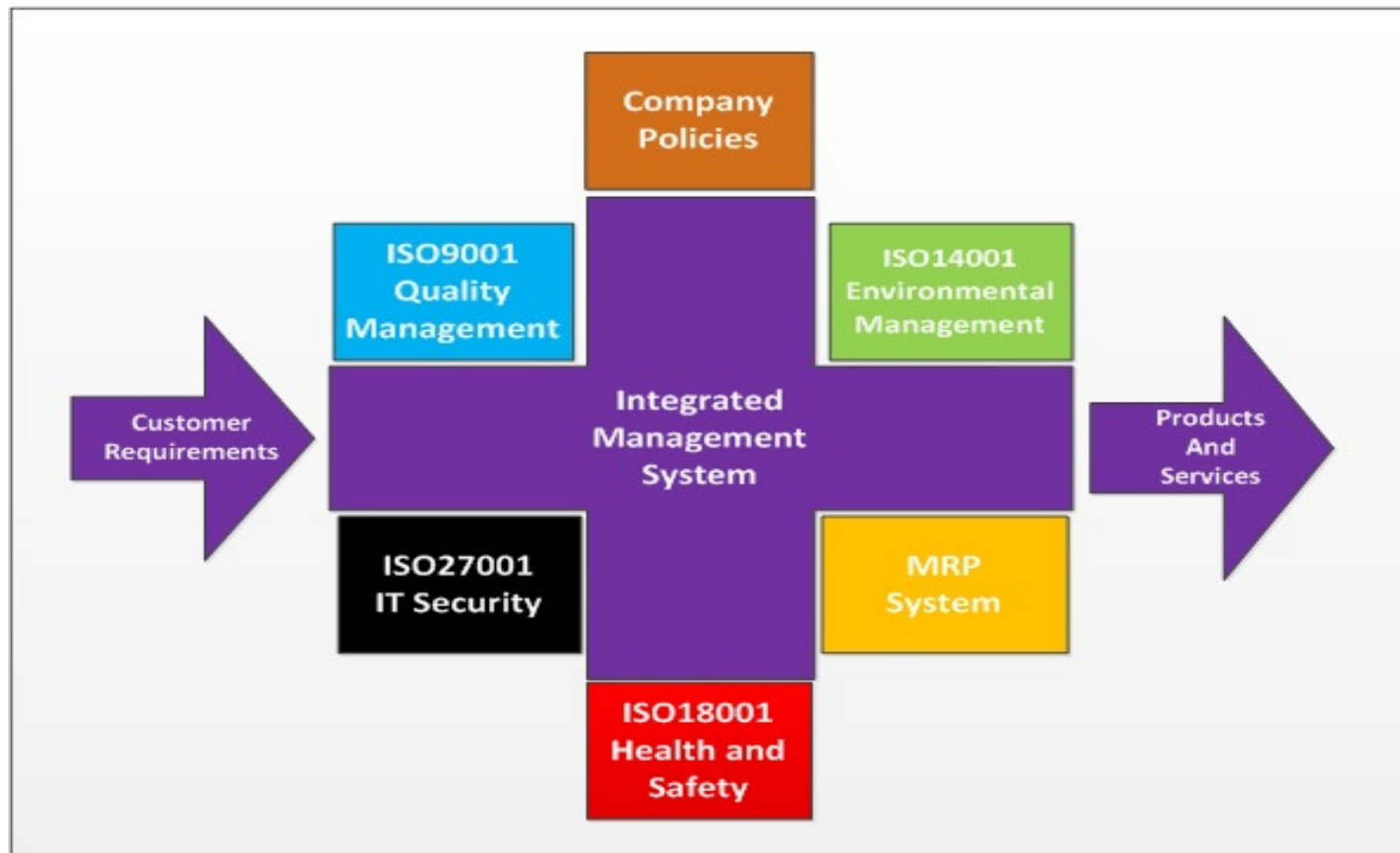
- Where to put data:



Wales Quality Centre



- Management systems – wide range



Wales Quality Centre



- IATF 16949:2016
- Automotive specification
- Highly prescriptive on data requirements
- SPC, FMEA, PFMEA, DFMEA, Root cause analysis – Global 8D
- The glue - Industreweb

